

# A450

## RFID POLYESTER LABEL

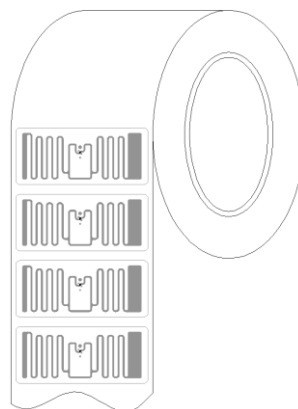
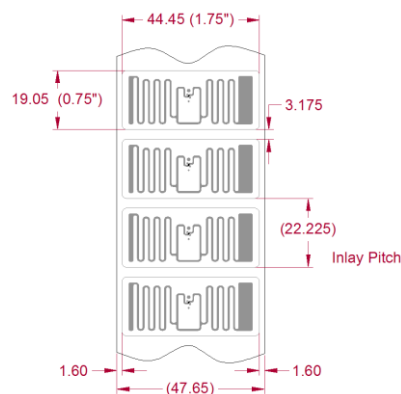
### Description

The A450 RFID label is poised to drive the most challenging of applications in the wide web of the Internet-of-Things. Ideal for high volume applications, A450 offers flexible EPC memory structure supporting nominal 96-bit EPC formats, plus a 32-bit expansion for longer EPC formats. A450 also features up to 32-bits for optional User Memory data. This enables the flexibility to store additional data beyond the EPC level such as encryption keys, additional asset information, and serial numbers.

### Technical data

Wet Inlay	
Inlay Width	1.75" [44.45mm]
Inlay Length	0.75" [19.05mm]
Web Width	1.88" [47.65mm]
Web Pitch	0.88" [22.225mm]
Core Width	1.88" [47.65mm]
Core ID	6" [152.4mm]*
Core Material	Fiberboard
Inlays per Roll	12,500 Nominal (Two Rolls per Box)
Maximum Roll OD	< 16" [406.4mm]
Roll Labeling Data	Roll #, Quantity
White	TT Printable White Film Only
Overlay Adhesive	General Purpose Permanent
Inlay Adhesive	General Purpose Permanent
Adhesive Application Temperature	> +25°F [-4°C]
Adhesive Service Temperature	-40°F to +200°F [-40°C to +93.3°C]
Release Liner	40# SCK

RFID	
Protocols Supported	GS1 Class 1 Gen 2 and ISO/IEC 18000-6C
Integrated Circuit	Higgs-10
Operating Frequency	840–960 MHz



EPC Size	128 Bits
User Memory	32 Bits (with 96 bit EPC)
TID	38 Bits
Unique TID	48 Bits
Access Password	32 Bits
Kill Password	32 Bits

Environmental	
Shelf Life	2 years at +77°F [+25°C] @ 40%RH
Recommended storage	+77°F [+25°C] @ 40% RH
Dry Inlay Operating and Storage Limits	-40°F to +158°F [-40°C to +70°C] 20% to 90% RH Non-condensing
Wet Inlay Operating and Storage Limits	-13°F to 122°F [-25°C to +50°C] 20% to 90% RH Non-condensing
Bend Diameter	> 1.97" [50mm]
Pressure	< 5N/mm <sup>2</sup>
Drop Resistance	Per ASTM D5276
Write Cycles	100,000 @ 25°C
RoHs	2002/95/EC, 2005/618/EC, 2011/65/EU Compliant
REACH	1907/2006/EC Compliant (SVHC and ECHA)
ESD Limit– HBM / CDM	5.0kV / 1.5kV

### Certificates

#### REACH

Please contact Altec for the latest REACH document available.

#### RoHS

Please contact Altec for the latest RoHS document available.

#### Disclaimer

Values shown in this document are averages only. For legal reasons, we emphasize that the information on this data is available as is and that Altec gives no guarantees with respect to the accuracy and completeness nor with respect to interpretations made on the basis of this information.